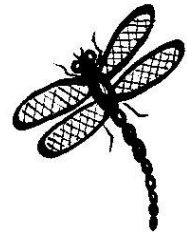


Directions to Wildside Education, Devon ST 147104, EX15 3QX.



From Exeter (26 miles).

Take the A30 East (towards Honiton), go past the first Honiton exit and then take the next exit signed to Dorchester. Turn immediately right after that on the bend (signed to Luppitt) and follow this road for 6 miles. At the top of the long hill bear right towards Smeatharpe, not straight on towards Dunkeswell. Keep on going towards Smeatharpe, past the Luppitt crossroads until you come to a staggered crossroads signed left to Madford.

Turn left along here, and follow signs to Madford (don't bear right towards Hemyock). Near the bottom of a steep hill, turn left along a dead end road signed to Mackham. After about half a mile along here you'll come to our field on your left, directly opposite the driveway of a white house. Park at the bottom of this field and we'll meet you there.

From Honiton (8½ miles).

At the top end of town, go over the A30 and turn next left signed to Luppitt. Follow this road for 6 miles. At the top of the long hill bear right towards Smeatharpe, not straight on towards Dunkeswell. Keep on going towards Smeatharpe, past the Luppitt crossroads until you come to a staggered crossroads signed left to Madford.

Turn left along here, and follow signs to Madford (don't bear right towards Hemyock). Near the bottom of a steep hill, turn left along a dead end road signed to Mackham. After about half a mile along here you'll come to our field on your left, directly opposite the driveway of a white house. Park at the bottom of this field and we'll meet you there.

From Tiverton, (10 miles from M5 junction 27).

From Junction 27 of the M5, follow the A38 towards Wellington. After 3 miles turn right onto the B3391, go over the river in Culmstock and then turn left to Hemyock. In Hemyock, turn right up High Street at the pump (monument) which stands in the road by the Ivy Café. Follow this narrow road for 1½ miles (up a hill, then down again, past the turning to Dunkeswell Abbey) and then turn right into a dead end lane

signed to Mackham. Follow this lane for about half a mile until you come to our field on your left, directly opposite the driveway of a white house. Park at the bottom of this field and we'll meet you there.

From Wellington/Taunton (7½ miles from M5 Junction 26).

If coming from Taunton, turn immediately left after coming off the M5. If coming from Wellington, go under the M5 and then take the next left after the sliproad.

Then at the T junction, follow signs to Ford Street and Hemyock. Go through Hemyock, and at the top of the village turn left at the pump (monument) which stands in the road by the Ivy Café. Follow this narrow road for 1½ miles (up a hill, then down again, past the turning to Dunkeswell Abbey) and then turn right into a dead end lane signed to Mackham. Follow this lane for about half a mile until you come to our field on your left, directly opposite the driveway of a white house. Park at the bottom of this field and we'll meet you there.

If coming by coach, please contact us for more information on access.